



breight
GROUP

Capability Statement

►► Our Business Our Journey

Welcome to Breight Group

A well-established and leading business within the Mining and Resources sector offering integrated asset maintenance and project services, Breight Group has formulated embedded work practices and values to deliver positive outcomes to our clients.

Commencing with a small team in 2007 focused on setting a new standard in the delivery of Access services, Breight Group has expanded to offer Access, Mechanical, Design Engineering, Optimisation and innovative technological solutions in maintenance and shutdown programs.

Our industry expertise and regional capability allow us to support clients in improving asset availability and reliability whilst reducing unplanned downtime. Our value-based business model is focused on working collaboratively with our clients to identify cost reduction solutions whilst upholding the highest safety, reporting, quality, and deliverable standards.

Our mission is to lead change through trusting relationships with our employees, partners and clients while adding sustainable value to the community.

Safety above all else

The safety of our employees is a core value and shall never be compromised. We commit to the highest standards of health and safety in our workplace and support this through our innovative training centre.

Regularly undertaking performance reviews and field-based observations we can better design solutions for risks and reoccurring problems associated with upcoming tasks. We equip our people with the skills, systems and processes they need to uphold best practice in all areas of service delivery.

We promote a work culture where individuals are encouraged to take personal responsibility, challenge the norm and feel empowered to speak up and offer new ideas.

The success of our Company relies on providing a safe environment for our personnel, upskilling our teams and consistently leading safety from the top of our organisation.



►► Safety and HSEQ

HSEQ Management Systems

Bright Group maintains certifications to HSEQ management systems by documenting processes, procedures, and responsibilities for achieving quality policies and objectives to improve operational effectiveness and efficiency on a continuous basis.

Bright Group holds the following HSEQ accreditations:

- ISO 9001:2015 Quality Management System
- ISO 14001:2015 Environmental Management System
- ISO 45001:2018 Occupational Health and Safety Management System

Integrated Risk Management approach

Risk management is not a standalone process but integrated within all processes in our business. Our approach focuses on continuous improvement to minimise risk. We undertake comprehensive risk analysis within the workplace to sustain and protect the environment and deliver quality outcomes.

Continuous improvement

'Total Process Excellence' is our core philosophy at Bright Group and our activities are performed in a systematic and controlled manner. We continuously identify areas for improvement that deliver benefits to our clients including consistent cost savings and improved risk mitigation.

Expertise in System Integration

We have the expertise to integrate systems across a range of unique and specific conditions, ensuring consistency in management and reporting across safety, quality, design, project delivery, controls and commissioning. This results in reduced exposure through reduced cost, pinpoint planning, no re-work or repetition, quality data collation and effective communication.



►► Mechanical

Bright Group's Mechanical department focuses on end-to-end service delivery through implementation of effective operational planning, task optimization, project management and staged work reporting.

Bright group provides a full range of mechanical services from material procurement, fabrication and installation services to ensure our clients project's are managed from start to completion at the highest standard.

Mechanical Capabilities

- Mechanical Services / Shutdown Maintenance and Project Execution
- Coded Welding
- Plasma and Oxy / Acet Cutting / Thermal Lancing / Arc Air-Gouging
- Liner Replacements and Upgrades
- Vibrating Screen Maintenance
- Hard Skirt Maintenance
- Chute Maintenance
- Scraper Blade Change Outs and Refurbishments
- Conveyor Pulley Replacements and Alignment
- Conveyor Maintenance including Hard Skirts, Roller Frames and Rollers
- Pipe-work Fabrication and Installation
- Structural Integrity Assessments and Remediation Work
- NDT (Non - Destructive Testing - UT, MPI, DPI)
- Industrial Blast and Painting
- Design and Engineering

Our Team

- Project Managers
- Construction Managers
- SMP Superintendent's
- SMP Supervisors
- Project and Site Engineers
- Qualified Fitters, Boilermakers and Pipe fitters
- Coded Welders
- NDT Technicians
- Crane operators and Riggers
- Skirt, Scraper and Roller Technicians
- Blast and Painters
- Poly-welders
- Trade Assistants
- Technical and Design Services
- Electricians

▶▶ Rope Access

Breight Group's Rope Access department is IRATA accredited, ensuring we operate to world class standards.

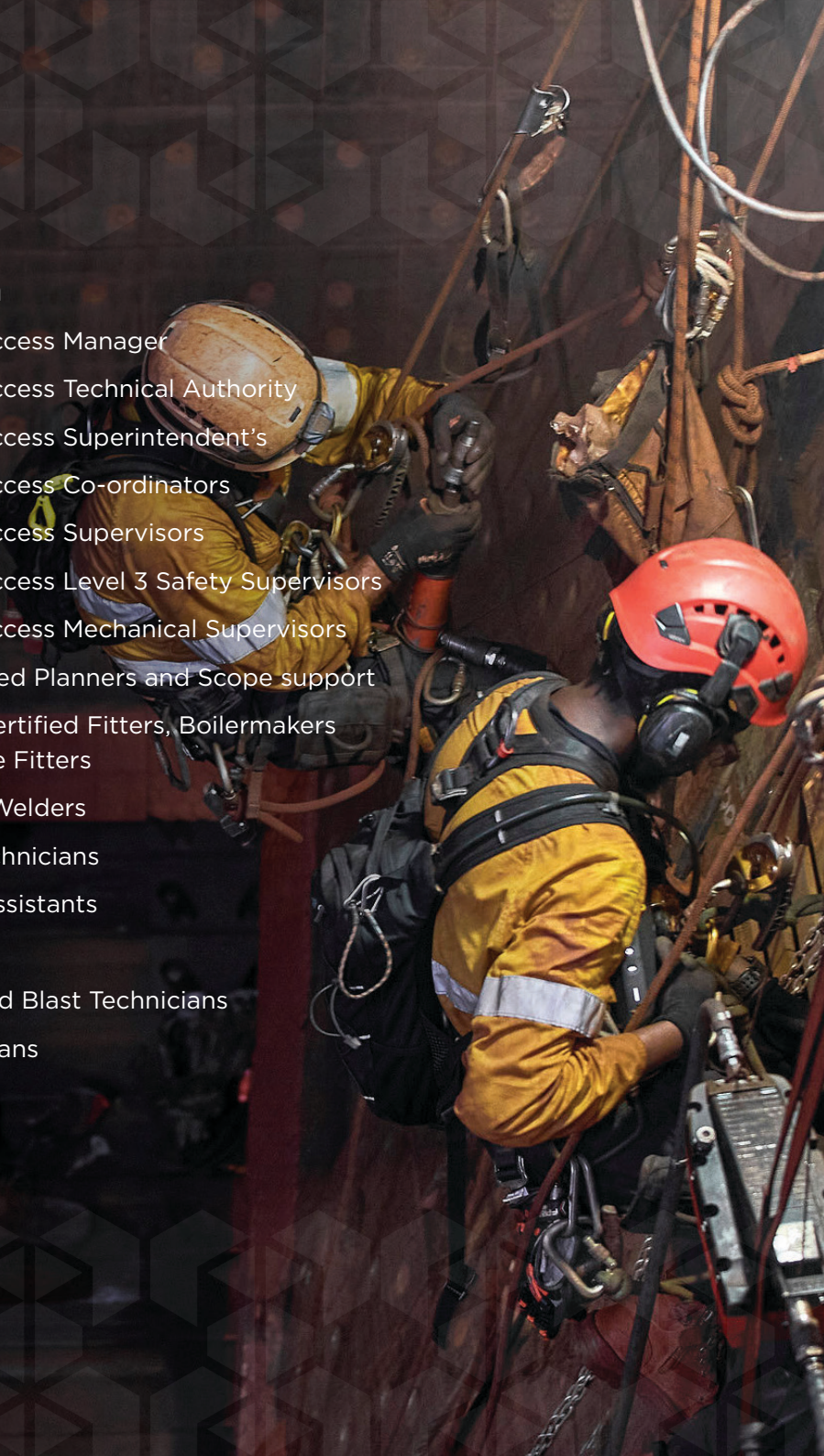
Our teams consist of IRATA members, and all operate under the IRATA International Codes of Practice (ICOP). We provide our clients with cost-effective access initiatives, throughout various complex environments & projects. Our team can provide expert advice to our clients - relating to the safest, most practical solutions for completing works via rope access methods.

Rope Access Capabilities

- ▶ Mechanical Services / Shutdown Maintenance
- ▶ Certified and Coded Welding
- ▶ Plasma and Oxy / Acet Cutting / Thermal Lancing / Arc Air-Gouging
- ▶ Conveyor Maintenance
- ▶ Installing Personnel Safety Systems (Debris and Netting Systems, Static Lines)
- ▶ Complex Rigging Activities
- ▶ Dropped Object Prevention Inspections
- ▶ Set up of Working at Heights Equipment and Anchor Points
- ▶ Construction and Deconstruction of Fixed Plant
- ▶ NDT (Non-Destructive Testing - UT, MPI, DPI) Visual Inspection and Reporting
- ▶ Chute / Surge Bin / Car Dumper and TLO Maintenance
- ▶ Rescue Services / CSE Management
- ▶ Blasting and Painting / Hard Surface Cleaning
- ▶ Marine Refurbishments and Maintenance
- ▶ Structural Integrity Inspections / Assessments and Remediation
- ▶ SMP Projects and Maintenance

Our Team

- ▶ Rope Access Manager
- ▶ Rope Access Technical Authority
- ▶ Rope Access Superintendent's
- ▶ Rope Access Co-ordinators
- ▶ Rope Access Supervisors
- ▶ Rope Access Level 3 Safety Supervisors
- ▶ Rope Access Mechanical Supervisors
- ▶ Site based Planners and Scope support
- ▶ Trade Certified Fitters, Boilermakers and Pipe Fitters
- ▶ Coded Welders
- ▶ NDT Technicians
- ▶ Trade Assistants
- ▶ Riggers
- ▶ Paint and Blast Technicians
- ▶ Electricians



► Scaffolding

Bright Group's Scaffold Access department specialises in the supply and management of scaffolding services.

We understand the importance of scaffolding on any project and look for solutions to every access challenge

Using innovative methods that focus on standardization and execution efficiency's we aim to ensure all our scaffold projects are completed with the highest standards in mind for our employees and clients.

Supported by our accredited RTO Bright Education we are able to facilitate industry 'best practice' education to deliver scaffolding services with confidence.

Scaffolding Capabilities

- ▶ Erection, Alter and Dismantling of Scaffolding in accordance with AS / NZ 1576 and 4576 Guidelines
- ▶ Installation of Hoists and Mono-rail Systems
- ▶ Installation of Static Lines and Alternative Anchoring Systems
- ▶ Project Management Services
- ▶ Engineering and CAD Services
- ▶ Customized Scaffolding Solutions through Design Innovation (e.g Crane-in Scaffolds, Engineering)
- ▶ Specialized 'Outalay' Software for Tracking and Standardization Methods
- ▶ Training - Basic / Intermediate and Advanced Scaffolding Courses (Bright Education - RTO Facility)
- ▶ Working at heights training and Safety Expertise
- ▶ Layher and Atp-ac System Training
- ▶ Sale and Hire of Scaffold Material

Our Team

- ▶ Area Managers
- ▶ Site Superintendents
- ▶ Execution Coordinator / Planners
- ▶ Scaffold Engineers
- ▶ Scaffold System SME'S (Subject Mater Experts)
- ▶ Scaffold Trainers
- ▶ Shutdown Supervisors
- ▶ Leading hands, Advanced / Intermediate and Basic Scaffolders
- ▶ Yard Formans
- ▶ Forklift and Telehandler Operators
- ▶ SME Scaffold and Working at Height Safety Advisors

► Breight Group Mechanical – Sample Projects

Replace Shuttle and Sweeps



Newmont Gold

Project: Replace Shuttle

Value: \$300k

Type: SMP

Replace HPGR Baghouse



Newmont Gold

Project: Bag House Replacement

Value: \$500k

Type: SMP

CLB Screen House Upgrade



Rio Tinto

Project: CLB Screen House

Value: \$5.6mil

Type: SMP & Rope Access

► Breight Group Mechanical – Sample Projects

Reagents Dosing Upgrade



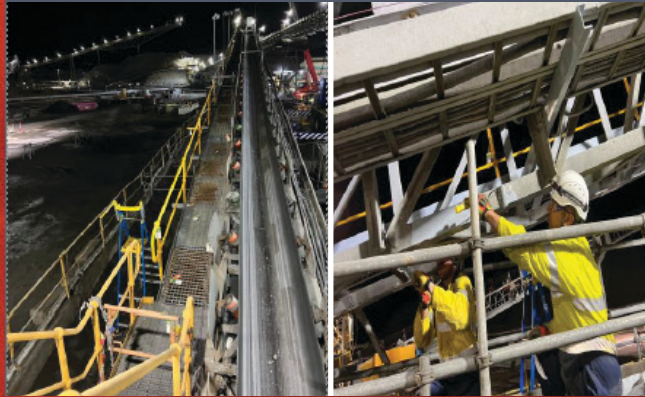
MRL-Lithium

Project: Reagent Dosing Upgrade

Value: \$850k

Type: Piping & Electrical

C222 Stringer and Walk Way



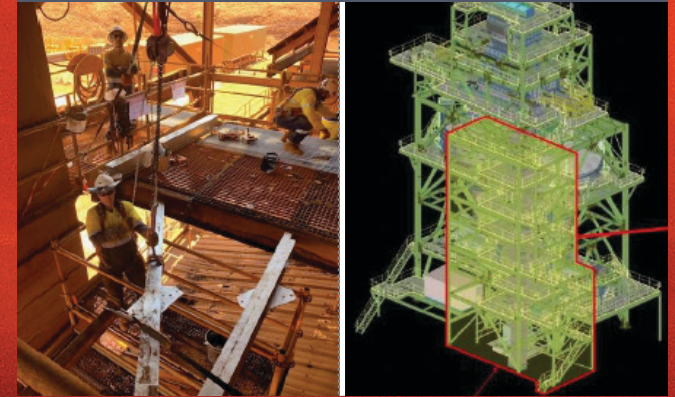
BHP

Project: C222 Replacement

Value: \$250K

Type: SMP

TLO Structural Remediation



FMG

Project: TLO Beam Replacement

Value: \$590K

Type: SMP

►► Data Management and Design

Information and Data Management is an essential tool for operational excellence. The value of effective project management system lies in the wealth of data available across the entire value chain to provide integrated, end-to-end visibility and the insights to understand decisions that will affect the short-term and long-term future of your operations.

Using our Outalay data system, we perform critical data analysis on mine site operations, enabling informed decision-making by leadership and operations teams.

Focusing on cost avoidance strategies we aim to provide efficiency's that optimize shutdown and maintenance schedules by reducing downtime, providing 'live' in-field and project progress reporting, wastage indicators, emergent work trends and delay breakdowns allowing our clients to make informed decisions based on real-time data to support operational best practices and master data validation.

Design Team Capabilities

- Scaffolding System Designs in Accordance with AU/NZ Standards and Manufacturer Guidelines
- Scaffold Material Inventory Monitoring
- Structural Analysis, Calculations, and Simulation Modelling
- Supply of Scaffold Construction Methodologies and Execution Plans
- Interactable 3D Models, Accessible on all Major Digital Platforms including VR and AR
- Consultation and Certification Support by any of: Product SME's, Manufacturer, or Engineers
- Project Data analysis, including Task Specific Identification, Estimating, and Scheduling
- Outalay Project Management System Support
- Live Project Data Analysis, including Infield Progress Reporting, Risk Identification, Resource Optimisation

Our Team

- SME Scope Specialists (all supplied trades)
- CAD Designers
- Structural Engineers
- Operations Planners
- Operations Schedulers
- Data Management SME
- Data Administrator's
- Software Integration Specialists
- Power BI Analyst and Developers
- Software Engineers

►► Education

Bright Education is Australia's first specialist Scaffolding training facility, located in WA.

Our goal is simple: To teach innovative, standardised work practices that enhance safety, reduce variability and increase productivity in the Mining and Resources sector.

Bright Education prides itself on its state-of-the-art training facility, located centrally in Rivervale. The industry focussed training centre is designed and equipped with industry specific equipment, simulating real working environments and providing our graduates with hands-on practical experience.

Our highly experienced Trainers and Assessors are focused on providing clients with a first-class experience based on current industry requirements and practices utilising state of the art equipment. We deliver a range of Nationally recognised training and competency services at our Bright Education Centre of Excellence in Rivervale, Western Australia.

Our complete set of courses cover a diverse range of high risk, specialised access and mechanical knowledge skill sets catering from novice to the experienced technicians.

The education packages we provide to all our people underpin the results we achieve. Our easy-to-follow training packages are delivered by Accredited Instructors with over 40 years'

industry experience. This ensures our graduates receive quality, industry-relevant instruction, coaching and encouragement, enabling them to become high-performing individuals.

We have aligned and modeled our scaffolding training programs on International Best Practice Standards as well as meeting Worksafe and Unit of Competency requirements. Bright Education scaffolding programs are internationally quality reviewed and Audited by Safety & Access - UK. Clients will be exposed to and trained in a range of 'gold standard' skills highly sought after in the scaffolding industry.

Bright Education Capabilities

- CPCCLSF4001 - Licence to Erect, Alter and Dismantle Scaffolding Advanced Level
- CPCCLSF3001 - Licence to Erect, Alter and Dismantle Scaffolding Intermediate Level
- CPCCLSF2001 - Licence to Erect, Alter and Dismantle Scaffolding Basic Level
- RIIWHS204E - Work Safely at Heights
- RIIWHS202E - Enter and Work in Confined Spaces
- MSMWHS217 - Gas Test Atmospheres
- Resource Specific - Mechanical Skill Assessments and Competencies
- RII20120 - Certificate II in Resources and Infrastructure Work Preparation

- CPCCLDG3001 - Licence to perform Dogging
- CPCCLRG3001 - Licence to perform Rigging Basic Level



▶▶ Breight Group Management Team

Stephen Easterbrook	Managing Director	stephen@breight.com	0409 372 435
Michael Douglas	Chief Operating Officer	mdouglas@breight.com	0408 523 410
Steve Charles	Director Commercial	scharles@breight.com	0410 44 3674



Breight Group Head Office ▶ enquires@breight.com ▶ 08 6216 5000 ▶ 1 Eyre Street, Rivervale WA 6103